

SUMMER TERM • ISSUE 28 • FRIDAY 27 APRIL 2018

☆ ☆ ☆ ——— ☆ ☆ ☆

This week's

Lothersdale Legends

have been awarded to:

Reception ~ Evie Mason
Year 1 ~ Maisie Oddy
Year 2 ~ Evie Sedgwick
Year 3 ~ Aiden Gill
Year 4 ~ Freddie Ward
Year 5 ~ Nancy Pickard
Year 6 ~ Holly Robinson

* YEAR 6 AWARD *

ISABELLE TAYLOR

☆ ☆ ☆ ——— ☆ ☆ ☆

Save the date!

*Please note there may be circumstances in which these dates are subject to change.
More information will follow at a later date about events listed below:*

- Mon 4 Jun 2018** - Next LSA meeting in school
Fri 15 Jun 2018 - LSA Family Quiz Night in school starting at 6pm

Deadlines & Reminders for w/c 30 April 2018

- Mon** - Reading Plus
- Deadline for the return of the Year 4 Eshton Grange consent form
- Class 1 & Class 2 Tennis Sessions
- Tue** - School Health: Rec & Y6 height and weight measurements
- Class 3 & Class 4 Dance Sessions
- Numeracy Plus
- Class 3 Maths Challenge at SCS (selected pupils)
- Wed** - Reading Plus
- Thu** - Spelling Plus
- Year 2 Come Dine With Me (pre-booked) ~ please arrive in school at 11.55am
- Fri** - Reading Plus
- Deadline for sibling new Reception starters ~ decision re PE bag/bookbag
- Class 2 Swimming Lessons
LSA ~ Ice lollies for sale after school (see LSA section of this newsletter)

EXTENDED SCHOOL'S ACTIVITIES ~ w/c 30 April 2018				
Monday	Tuesday	Wednesday	Thursday	Friday
Gymnastics 1 3.15 - 4.15pm	Gardening Club 3.15 - 4.00pm	Drama KS1 & KS2 3.30 - 4.30pm	Supersports 3.15 - 4.15pm	Mosaic Club 12.40 - 1.10pm
Gymnastics 2 4.20 - 5.20pm	Get Groovy 3.15 - 4.15pm	Rugby Tots 3.15 - 4.15pm		Football 3.15 - 4.15pm
Science Club 3.15 - 4.00pm	Rebel Girls 3.15 - 4.00pm			
Running Club 3.15 - 4.15pm	Woolcraft 3.15 - 4.15pm			

What's Happening in the Classroom and Beyond?

Class 1 ~ Special Visitors

Class 1 children were very excited about their special visitors on Tuesday afternoon.

Two lambs (both girls) came into school with Mrs McGarrell (James and Mollie's mum) and the children all took turns to feed them. The lambs are three week's old and the children had all prepared questions for Mrs McGarrell to answer. The children also learnt about sheep terminology (gimmers, ewes etc) and really enjoyed their afternoon session.



Thank you to Mrs McGarrell for taking the time out of her busy lambing schedule to bring the lambs into school to show the children. If you wish to find out more about Mrs McGarrell's mobile farm, please see the flyer at the back of the newsletter.

Class 1 ~ Woodland Walk ~ 26 April 2018



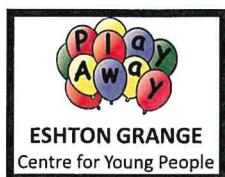
Class 1 braved the weather and headed out to the woods yesterday for their woodland walk. They had great fun collecting lots of 'ingredients', which they made into a fantastic 'woodland soup'.

Class 1 and Class 2 ~ Tennis Sessions

Class 1 and Class 2 started their tennis sessions this week with Ulric from Skipton Tennis Centre. They really enjoyed balancing a ball on a racket, team games and other tennis skills, which they will develop over the coming weeks.

Class 3 ~ Dance Sessions

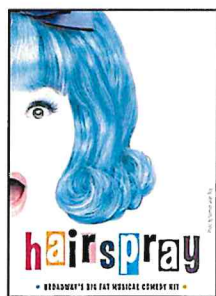
We are really enjoying our street dance sessions with Stephanie from Kanga Sports this term. Stephanie is taking us through a range of dynamic dance moves and we are designing our own routines culminating in our group synchronised movement canon. We are finding street dance a great fun way to express ourselves - watch out Diversity, you could have competition!



Year 4 Residential Visit to Eshton Grange ~ 6 to 8 June 2018

Information packs were sent out on Wednesday via bookbags regarding this year's Year 4 residential visit to Eshton Grange near Gargrave. Please ensure completed consent forms are returned to school by Monday 30 April 2018. A Parent Information Evening will be held in school at 6.15pm on Monday 21 May 2018 (please note children should not attend as this enables parents/carers to freely discuss any concerns you may have ~ children will be briefed separately in class prior to the visit).

Please remember that the payment for Eshton Grange is on ParentPay for parents/carers of children in Year 4 to pay in to on an ad-hoc basis to help ease the costs. Please note that payment for this visit is not a voluntary contribution and the deadline for full payment is Friday 18 May 2018.



Double Take Drama ~ Musical Theatre Workshop ~ August 2018

Double Take, our Extended Schools drama provider, will be rehearsing and performing 'Hairspray' for the Musical Theatre Workshop taking place on Monday 13 August to Thursday 16 August 2018 from 10am to 3pm each day at Riddlesden United Reformed Church. There will be a performance for family and friends at 2pm on Thursday 16 August at Keighley Playhouse. The drama club is very popular with Lothersdale pupils and anyone can take part from age 5 upwards. If you would like to book a place on this workshop, please see the flyer attached to this newsletter for further details.

School Office and Updates

Class 2 ~ Weekly Swimming Lessons ~ Summer Term

Thank you to those of you who have been able to make the payment towards your child's Class 2 swimming lessons this term. We have received 58% of contributions to date. If you have not yet made a contribution and still wish to do so, please ensure payment is made as soon as possible to enable us to meet the provider costs. No child will be excluded if his or her parents/carers do not contribute, but if insufficient voluntary contributions are received then regrettably, this activity will not continue.

School Contact Information

Please remember that if you wish to contact a member of staff or have a general query, you can email us via lothersdale@ycatschools.co.uk and your message will be passed on to the appropriate member of staff or dealt with accordingly. You can also use the contact form available on the school website.

Pupil Medical Information

It is important that school is kept updated regarding any changes to your child's health. Please inform the school office as soon as possible if your child's medical details change to enable us to keep our records up-to-date. Please ensure school is informed if your child has a head bump out of school. This information is vital if your child suffers a secondary head bump in school, as it enables the school to take extra precautions and allow for closer monitoring in this situation.

Friday News Online

Please remember that if you do not receive a hard copy of the Friday News, or mislay the copy sent home every Friday, the newsletters can also be found on the school website for your information.

Pre-admissions Register of Interest List

The school Pre-admissions Register of Interest List for a potential reception place at Lothersdale Primary School has filled up quickly for next year's September 2019 admission group. It is important that parents/carers register their interest for a reception place for their child as soon as possible (even if you live in the village) to enable us to determine potential numbers and the impact it will have on the future school roll. Please be aware that entering your child's name on this list does not constitute the offer of a Reception place.

Admission Year	Entry Date	Date of Birth Range	No. of Places Available	Registrations of Interest Received to Date
2019/2020	Sept 2019	1.9.2014 to 31.8.2015	15	15
2020/2021	Sept 2020	1.9.2015 to 31.8.2016	15 (TBC)	10
2021/2022	Sept 2021	1.9.2016 to 31.8.2017	15 (TBC)	2
2022/2023	Sept 2022	1.9.2017 to 31.8.2018	15 (TBC)	2

If you have not yet registered your interest for your child on any of the above school lists, please contact Mrs Ellison, in the School Office, on 01535 632510 or email lothersdale@ycatschools.co.uk as soon as possible for a school application form. Alternatively, if you have friends or relatives of children who fall within the above categories, please ask them to contact the school office for an application form.

School Website

Remember to look on our School Website for further information on what is happening around school!

New Postings on our Website this week:

Friday News

Photographs ~ Class 4 Debating Competition

Photographs ~ Class 4 egg decorating pictures

Lothersdale School Association

LSA 100 Draw

Thank you to all those parents/carers/grandparents who have entered the LSA 100. The second draw took place on Monday 23 April 2018 at the LSA meeting and the winners are listed below. Cheques will be sent out via the relevant school bookbags on Monday.

1st - Claire Mason

2nd - Sam Grey

3rd - Samantha Fernie



Ice lollies for sale on the playground

The LSA will be selling ice lollies on the playground after school, weather permitting, every Friday from 4 May 2018. Lollies will cost 50p each and a text will be sent out to confirm if they will not be available due to weather or other extenuating circumstances. *(Please note that the lollies pictured may not be representative of the items on sale).*

LSA Bag2School Collection ~ Friday 18 May 2018

The next Bag2School Collection will be held on Friday 18 May 2018 so please start collecting unwanted items to raise money for school. Bags have been sent out to each pupil via bookbags today. Bin bags are also acceptable. **Important ~ please note:**



We accept the following 'good quality' items for RE-USE:	We DO NOT accept:
<ul style="list-style-type: none"> ✓ Men's, Ladies and Children's clothing ✓ Paired shoes (tied together or elastic band around) ✓ Handbags ✓ Hats ✓ Bags ✓ Scarves and ties ✓ Jewellery ✓ Lingerie ✓ Socks ✓ Belts ✓ Soft toys ✓ Household linen ✓ Curtains ✓ Towels ✓ Bedding (bed sheets, pillow cases and duvet covers) 	<ul style="list-style-type: none"> X Duvets and blankets X Pillows and cushions X Carpets, rugs and mats (including bath, shower and toilet mats) X Soiled, painted, ripped or wet clothing X School uniforms with and without logo X Corporate clothing and workwear X Textile off cuts, yarns or threaded material

LSA Meeting ~ Monday 4 June 2018

The next LSA meeting will take place in school at 7.30pm. Everyone is welcome to come along and we look forward to seeing as many of you as possible.



LSA Family Quiz Night ~ Friday 15 June 2018

The next LSA event will take place on Friday 15 June 2018 when we will be holding a Family Quiz Night in school.

Please save the date in your diary ~ more details will follow nearer the time.

Community Noticeboard

We are delighted to be able to promote community events in our Friday News that may be of interest to our families and friends. If you would like us to promote a local event please pass the details to the school office by Wednesday to be included in the Friday News of that week



Keighley Women's Refuge (Bradford Women's Aid)



Please remember we are linked up with Christ Church Lothersdale to support Keighley Women's Refuge and a box is available in the main reception area for any donations you may wish to bring in towards this. Please feel free to place items in the box in the main reception area when you can.

The Women's Refuge provides home starter packs when the families are rehoused, which comprise the following (new) items: *Toiletries, cleaning products, cleaning equipment, kitchen equipment (eg pans, plates, mugs), food items (long life food items are ideal, eg tins and packets of food)*. If you are able to donate any of the above, they will be gratefully received. Many thanks.

Diary of Events

Please note there may be circumstances in which these dates are subject to change:

School Events:

- | | |
|-----------------|--|
| Tue 1 May 2018 | - School Health: Rec & Y6 height and weight measurements |
| Thu 3 May 2018 | - Year 2 Come Dine With Me at 12 noon |
| Mon 7 May 2018 | - School Closed for May Day Bank Holiday |
| w/c 14 May 2018 | - KS2 SATS Week |
| Fri 18 May 2018 | - LSA Bag2School collection |
| w/c 21 May 2018 | - Let's celebrate 'Shavuot' |
| Mon 21 May 2018 | - Y4 Eshton Parent Information Meeting in school at 6.15pm |
| Tue 22 May 2018 | - Class Photos and Year 6 Leavers' Photos |
| Thu 24 May 2018 | - Class 1 Talking Tables Workshop (for parents/carers and/or grandparents) ~ 9.00am to 10.30am |
| Thu 24 May 2018 | - Teddy Bears' Picnic Lunch |
| Fri 25 May 2018 | - School breaks up at 3.15pm |
| Mon 4 Jun 2018 | - School reopens at 9.00am |

- Tue 5 Jun 2018 - New Reception class weekly transition visits start at 1.00pm
- Wed 6 Jun 2018 - Year 4 Residential Visit to Eshton Grange
- Thu 7 Jun 2018 - Year 4 Residential Visit to Eshton Grange
- Thu 7 Jun 2018 - Year 4 Residential Visit to Eshton Grange
- Thu 7 Jun 2018 - Y5/6 Forensic Science Event at SCS (selected pupils)
- w/c 11 Jun 2018 - Let's celebrate 'Eid'
- w/c 11 Jun 2018 - Year 1 Phonics Screening Week
- Tue 12 Jun 2018 - Y5/6 Rounders Festival at SCS (selected pupils)
- Fri 15 Jun 2018 - Class 4 Debating Team Final at County Hall, Northallerton
- Wed 20 Jun 2018 - Parent Forum ~ Class 1 & Class 2
- Wed 20 Jun 2018 - Y1/2 Mini Olympics at South Craven School (selected children)
- Thu 21 Jun 2018 - Parent Forum ~ Class 3 & Class 4
- w/c 25 Jun 2018 - Arts Week ~ 'One World' ~ Environmental issues and recycling
- Tue 26 Jun 2018 - New Reception Parents' Welcome Evening
- Wed 27 Jun 2018 - Year 5 Day at South Craven School
- Thu 28 Jun 2018 - Year 6 Transition Day at Ermysted's Grammar School
- Thu 28 Jun 2018 - Year 6 Transition Day at Skipton Girls' High School
- Mon 2 Jul 2018 - Year 6 Induction Day at South Craven School (Day 1)
- Tue 3 Jul 2018 - Year 6 Induction Day at South Craven School (Day 2)
- Wed 4 Jul 2018 - Wimbledon Lunch
- Wed 4 Jul 2018 - South Craven Open Evening ~ September 2019 intake ~ 6.00pm
- Thu 5 Jul 2018 - Sports Day ~ 1.30pm
- Tue 10 Jul 2018 - Year 6 Bikeability Training (Day 1)
- Tue 10 Jul 2018 - New Reception Transition/Parents' School Lunch at 12 noon
- Wed 11 Jul 2018 - Year 6 Bikeability Training (Day 2)
- Thu 12 Jul 2018 - Reserve Sports Day at 1.30pm
- Fri 13 Jul 2018 - All extended schools clubs finish
- Fri 13 Jul 2018 - Last Class 2 swimming lesson
- Wed 18 Jul 2018 - Year 6 Leavers' Lunch
- Wed 18 Jul 2018 - Year 6 Leavers' Concert Dress Rehearsal at 2.00pm
- Wed 18 Jul 2018 - Year 6 Leavers' Concert and Presentation at 7.00pm
- Thu 19 Jul 2018 - Class 1 & Class 2 Leavers' Disco ~ 6.00pm to 7.15pm (with Year 6)
- Thu 19 Jul 2018 - Class 3 & Class 4 Leavers' Disco ~ 7.30pm to 8.45pm
- Fri 20 Jul 2018 - School breaks up for the summer break at 3.15pm
- Mon 3 Sep 2018 - School closed for staff training
- Tue 4 Sep 2018 - School re-opens for the new academic year
- Fri 5 Oct 2018 - LSA Bag2School collection

Community Events:

- Mon 13 - Thu 16 - Double Take Drama Workshop 'Hairspray'. 10am to 3pm at
Aug 2018 Riddlesden United Reformed Church, Scott Lane, Riddlesden.
£85 for the four day course (£25 deposit payable on booking to
secure your child's place). Performance for family and friends
at 2pm on Thursday 16 August at Keighley Playhouse. Please
contact Laura Judge on 07738 588308 or email
laurajanejudge@gmail.com



HAIRSPRAY

MUSICAL THEATRE WORKSHOP

Sing, dance, act and have your chance to shine
Monday 13th - Thursday 16th August 2018 10am-3pm

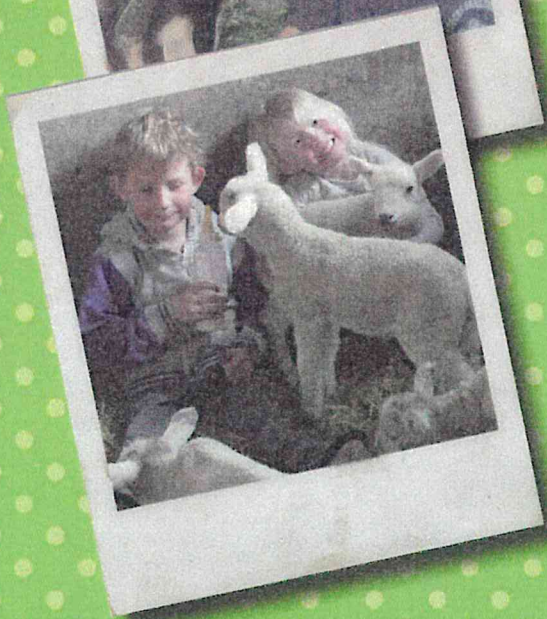
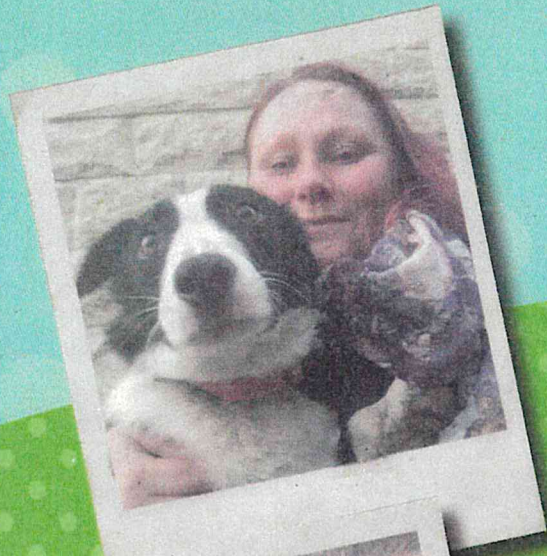
Riddlesden United Reformed Church, Scott Lane, Riddlesden

With performance **ON STAGE** at Keighley Playhouse 2pm on the Thursday

BOOK NOW! Contact Laura Judge 07738588308 laurajanejudge@gmail.com

£85 - £25 deposit payable on booking to secure your place

FARMER GILL'S MOBILE FARM



Hello! I'm **Farmer Gill**,

I am very passionate about farming and education.

Here at McGarrell's Farm, I will bring the farm to you so you can touch, feel and hold the animals whilst you learn about how they are raised and farm to fork process.

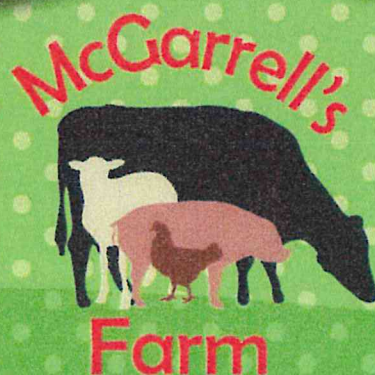
I like to include the national curriculum, especially maths and science, as we have fun learning about the animals in a safe environment.



For further information or to book your party or visit:

Call: 07955 660 508

Email: gmcgarrell@live.co.uk



Bag2School



@bag2schooluk

www.bag2school.com



follow us on Facebook

Our next **Bag2School** collection
has been arranged for

FRIDAY 18th MAY 2018

at 9.00 am / pm

Any questions - please ask your
school collection organiser

LSA

www.bag2school.com



Lothersdale Primary School
*ensuring all pupils
achieve their
full potential*



Lothersdale Primary School
Lothersdale
North Yorkshire
BD20 8HB

