

It's hard to walk away
from the best of days,
But if it has to end,
I'm glad you have
been my friend,
In the time of our lives!



















You're a star.
You're a star.
What a clever clogs you are.
Show us something you have learned
today.
Well done hip hip hooray

Aa Bb Cc Dd Ee





















Cc Dd Ee
Hh Ii Jj Kk
Oo Pp Qq Rr
Uu Vv Ww

MONSTER
Why Elephant

Jessica Smith	William Outhwaite
Isabelle Taylor	Morgan Brook
Callum Waterhouse	Amelia West
Lola Birns	Ruby Hart
Thomas Wood	Evie Park
Archie Pier	Holly Robinson
Ella	John
	William

The Great Old Duke of York
Three Blind Mice
I Can See a Little Peter Rabbit
I've Got a Little Spider
Humpty Dumpty

LOWERSHOLD
1899









30









Moorside
B
S

Timeline
Of
Bradford
Objects





0T8207

OAK WORTH

165
KEIGHLEY

FELIX!
The Felix family are the most popular of the museum's exhibits. They are a family of three, consisting of a mother, a father and a young child. They are all very friendly and love to meet their visitors. They are also very smart and well-dressed. They are a very popular family and are always a sight to see. They are a very special family and are a very important part of the museum's collection. They are a very special family and are a very important part of the museum's collection.

FEEDING:
The Felix family are very picky eaters. They only eat the best quality food. They are very particular about their food and will only eat what they like. They are a very special family and are a very important part of the museum's collection. They are a very special family and are a very important part of the museum's collection.























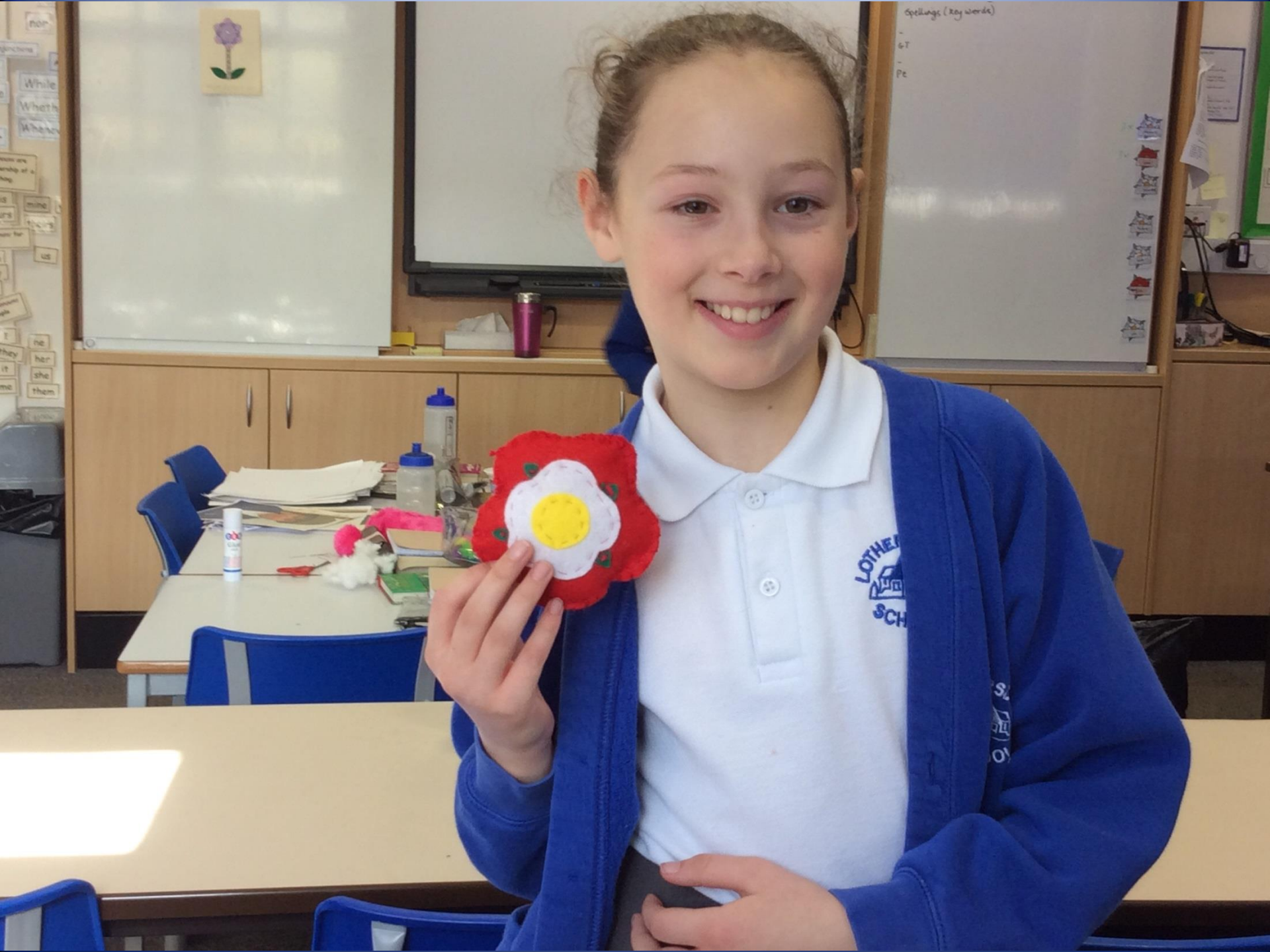














$1 \times 6 = 6$
 $2 \times 6 = 12$
 $3 \times 6 = 18$

LOLA

Emily



diameter

circumference

My answer is 18
the nearest 10.
my original num

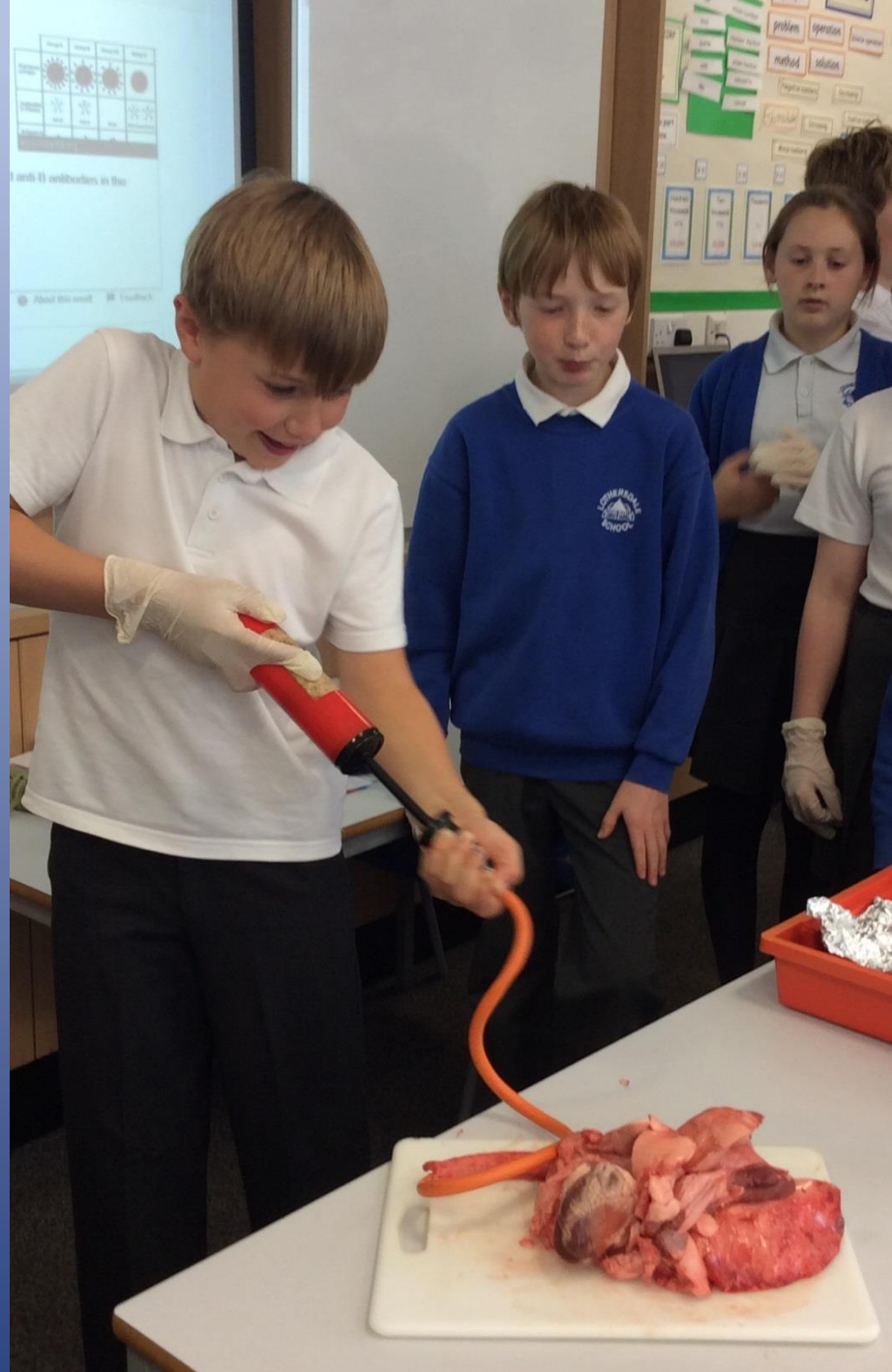
Fractions have **two** parts. The **l**
number is the **denominator**: the
number of equal parts that the w
has been divided by. The upper
number is called the **numerator**:
number of those equal parts that
been 'taken'.

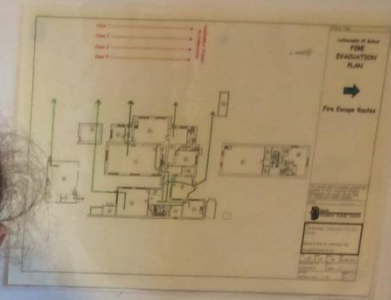
When we combine a **whole**
number with a **fraction**, we
call it a **mixed number**, e.g. $2\frac{1}{4}$, $3\frac{1}{2}$.

... a fraction to its **simplest**
need to find a factor that is
both the numerator and
... $3/12$ - both 3 and 12
... tly by 3 to give $\frac{1}{4}$.

... **proper fraction**:
... $s + \frac{1}{4} = 13$ quarters
... $3/4$

An **improper fraction** is a
fraction whose true value is
more than 1.





- IF YOU DISCOVER A
- 1. Do not touch the alarm
 - 2. Do not touch the alarm
 - 3. Do not touch the alarm
 - 4. Do not touch the alarm
 - 5. Do not touch the alarm
 - 6. Do not touch the alarm
 - 7. Do not touch the alarm
 - 8. Do not touch the alarm



Date: _____
Outdoor































Month	Year	Age	Gender
Jan	2000	12	M
Feb	2001	11	F
Mar	2002	10	M
Apr	2003	9	F
May	2004	8	M
Jun	2005	7	F
Jul	2006	6	M
Aug	2007	5	F
Sep	2008	4	M
Oct	2009	3	F
Nov	2010	2	M
Dec	2011	1	F





Goodbye Year 6 and Good Luck!

