

welcome to

**LOTHERSDALE PRIMARY
SCHOOL**

Lothersdale Primary School is a happy, vibrant place where learning is at the heart of everything we do. The dedicated, supportive staff team immerse pupils in a strong learning culture: encouraging independence, resilience and teamwork within a supportive, nurturing and inclusive atmosphere.



Our school has high expectations and a track record of consistently achieving high pupil outcomes. Our achievements have been recognised by Ofsted in January 2006, October 2008 and, most recently, July 2014 when we have been judged 'Outstanding' in all areas, with no significant areas for improvement.

I hope that this photo gallery provides you with an insight into life at Lothersdale School and supports you in making the important choice for your child's education.

A handwritten signature in blue ink, which appears to read "Colin Crook", is positioned above the printed name.

Mr C Grogan
Headteacher



Our school



We can also play in our
woodland area at play
times

This is the playground
where we play and do P.E.





This is where we line up when the bell rings in the morning and at break and lunch times



This is the main school entrance



We walk into school
through this main
door



We walk passed the school
office where the school
administrator works

This is the main reception area
and we go through these doors
to our classroom (Class 1)



We then walk along this
corridor to Class 1

This is where we hang our coats and P.E. bags. It is called a 'cloakroom' and we have two pegs with our names on so that we know where to put our things



We also need to remember our wellies because we go to the woods and park a lot!

Our class teacher is called
Mrs Bateman



Mrs Gallagher
is a Teaching Assistant and
helps Mrs Bateman



They both make sure we are happy when we are at school



Class 1

This is our classroom where we learn to do lots of exciting things with Mrs Bateman and Mrs Gallagher

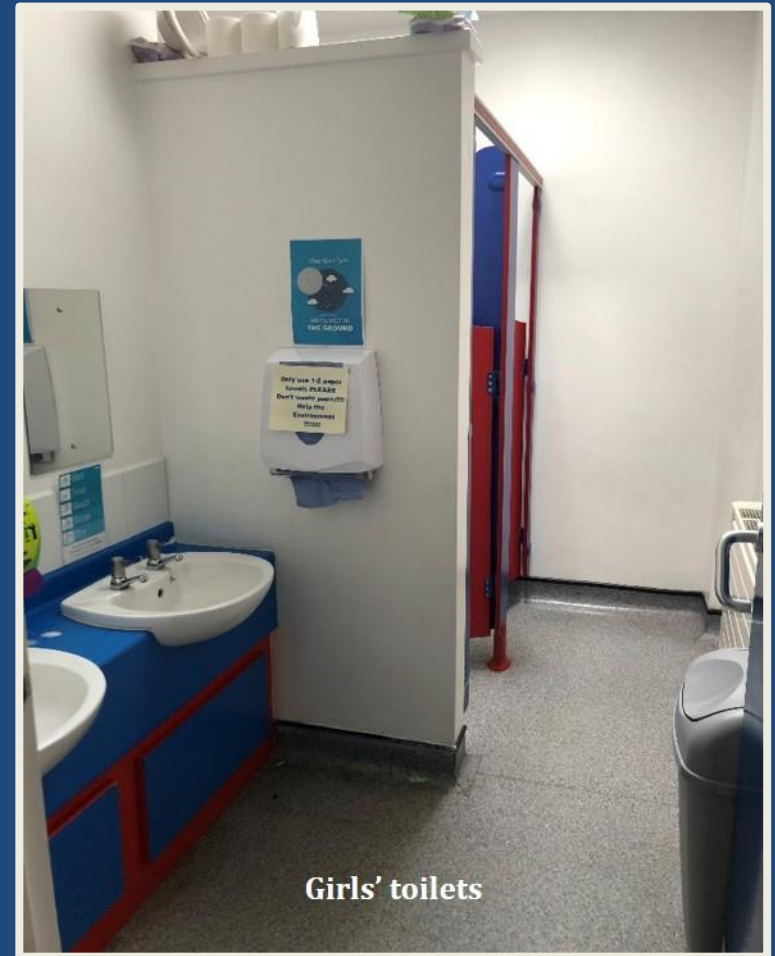
We are not like the other classes in school because we also have a very special outdoor space where we can play



When we need the toilet, we have to ask Mrs Bateman or Mrs Gallagher and they will help us go to the toilet



Boys' toilets



Girls' toilets

The toilets are just outside the classroom so they are easy to get to



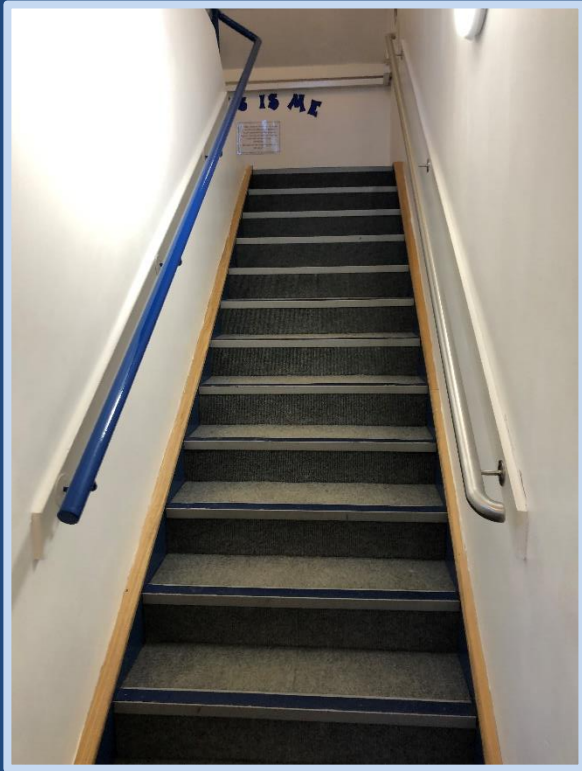
This is our school hall where we have assemblies, music lessons, P.E. lessons and our lunch

Class 2

When we go up into Year 1 we share our class with Year 2
and this will be our classroom



It's very exciting to
move into Year 3
because we get to have
the classroom upstairs!



Class 3
This is the classroom we
will share with Year 4

Class 4

When we move into Year 5 we will share our classroom with Year 6 and this is what the classroom looks like



Thank you for taking the time to look through our gallery of photographs, which we hope helps you visualise Lothersdale Primary School.

Please also view our school website in more detail, particularly our weekly newsletters (Friday News), as they will give you a flavour of what we do in school over an academic year.



We currently hold a Pre-admissions Register of Interest List for prospective parents/carers. If you would like your child to be included on this list, please download the form from the school website under **INFO/Admissions/Prospectus and Register of interest** and scroll down the page for the attachment.

Please email your completed form to the school office via lothersdale@ycatschools.co.uk



Lothersdale Primary School

ensuring all pupils
achieve their
full potential

